

# GODREJ NURTURE

SECTOR 150, NOIDA

---

#PlayandGrow

---

 | **PROPERTIES**



THOUGHTFULLY  
DESIGNED HOMES  
WHERE YOUR KIDS CAN  
**#PLAYANDGROW**



STRATEGICALLY  
LOCATED



SECURED  
ADDRESS



THOUGHTFULLY  
DESIGNED



#PLAYANDGROW



DND Expressway

IGI Airport

Gautam Buddha Park

Radisson Blu

Atta Market

Noida Golf Course

FNG Expressway \*

Hindon River

Wipro

Honda

LG

Moserbaer

Mahamaya Flyover

Amity University

Jaypee Hospital

DPS

Genesis Global School

IT HUB- Sector 135

Noida-Greater Noida Expressway

Advant Navis Business Park

Knowledge Park

Metro Station \*

International Standard Cricket Stadium

Kailash Hospital

18-Hole Golf Course

GODREJ GOLF LINKS

Pari Chowk







DPS






Radisson

Max

Grand Venice Mall

LEGENDS

-  School/College/Institute
-  Landmark
-  Commercial Complex
-  Metro under Construction
-  Hospital
-  Expressway

-  F1 International Circuit
-  Mall
-  Temple
-  Metro Line
-  Park

\* Construction in Progress

Source: Google Maps. Maps not to scale.

LOCATION MAP

Faridabad

Shaheed Bhagat Singh Park

Shriram Millennium School

GODREJ NURTURE

World Trade Center Noida

Yamuna Expressway

Towards Proposed Airport



## UPCOMING METRO STATION SECTOR 148 IN CLOSE PROXIMITY\*

\*Source: <https://timesofindia.indiatimes.com/city/noida/noida-metro-extends-trial-run-to-alpha-ii/articleshow/62762365.cms>

Stock image is for representative purposes



## CLOSE PROXIMITY TO PROPOSED INTERNATIONAL AIRPORT AT JEWAR\*

Stock image is for representative purpose.

\*Source: <https://www.financialexpress.com/photos/business-gallery/734988/jewar-airport-news-2017-greater-noida-5-things-to-know-new-international-airport-uttar-pradesh-jewar-airport-map/>



## WELL-CONNECTED TO 3 MAJOR EXPRESSWAYS\*

NOIDA – GREATER NOIDA EXPRESSWAY, YAMUNA EXPRESSWAY AND EASTERN PERIPHERAL EXPRESSWAY

Stock image is for representative purpose.

\*Source: <https://indianexpress.com/article/cities/delhi/noidagreater-noida-expressway-where-safety-takes-a-backseat/>



# SOCIAL INFRASTRUCTURE

## A PLACE THAT HAS EVERYTHING



### SCHOOLS

- Amity International School, Sec 44 Noida
- Lotus Valley International School, Sec 126 Noida
- DPS, Sec 132 Noida
- Somerville International School, Sec 132 Noida
- Shriram Millennium School, Sec 135 Noida



### COLLEGES & TECHNICAL INSTITUTES

- Amity University, Sec 125 Noida
- Galgotia University, Knowledge Park, Gr. Noida
- Sharda University, Knowledge Park, Gr. Noida



### HOSPITALS & HEALTHCARE SETUPS

- Fortis, Sec 62 Noida
- Kailash Hospita, Knowledge Park, Gr. Noidal
- Max Hospital, Gr. Noida



### CORPORATES

- Honda,
- Moser Baer
- LG
- Wipro Technologies
- Ansal IT City and Parks Ltd.
- NIIT Technologies Ltd.
- KPMG
- Advent Business Park
- Accenture



# ADVANTAGE SECTOR 150



## NCR's 'greenest' Noida sector projects speed up

✉ 🖨 A- A+



NOIDA: To speed up world class infrastructure in sector 150- which is considered as NCR's greenest sector, the Noida Authority top brass reviewed all projects.

On explaining the details Noida Authority on Sunday said that developed over 600 acre land, sector 150 will be the greenest sector of NCR. 80 percent of the sector will be green while with

42 acre, one of the biggest park in the country is also being developed in the same sector. Apart from that the authority has also planned to develop Sports city.

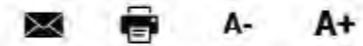
The Authority has also proposed Sports City project, which is being developed by Lotus Greens Developer. "The low-density Sports City, which is developed on 300 acres at a cost of over Rs 2,300 crore, will offer recreational as well as residential facilities. A separate provision for a permissible ground coverage and FAR (Floor Area Ratio) has been proposed as per the Building Regulations Act of Noida and its Master Plan 2031," a senior official, who attended the meeting said this Sports City will go a long way in establishing sporting infrastructure and become a sports destination. "In today's living standard, people have dropped physical activities. Space crunch is also another reason behind it. Some groups are running Rahgiri. Our idea is to offer sports more accessible to the population and to promote healthy living. The proposed sports city will provide a platform to both professionals as well as aspiring youngsters," said the official.

Purusharth Aradhak | TNN | Updated: Jun15, 2015, 15:03 IST

# GREENEST SECTOR OF NOIDA WITH 80% OF GREEN SPACES AND A 1,69,968 SQ.M. (42 ACRES) PARK

\*SOURCE: [HTTPS://TIMESOFINDIA.INDIATIMES.COM/GOOD-GOVERNANCE/UTTAR-PRADESH/NOCRS-GREENEST-NOIDA-SECTOR-PROJECTS-SPEED-UP/ARTICLESHOW/47675137.CMS](https://timesofindia.indiatimes.com/good-governance/uttar-pradesh/nocrs-greenest-noida-sector-projects-speed-up/articleshow/47675137.cms)

# Noida's Sector 150 to be NCR's first overhead wires free zone



NEW DELHI: Sector 150 to be the first NCR Sector, which will be overhead wiring free, the Noida Authority officials said all kind of electric wires including power, internet, telephone etc. will be underwire thorough RCC ducts in Sector 150, which is also considered as "greenest sector of NCR".

To make the city overhead lines free, the Noida authority has initiated drive. All city lines to be replaced to underline ducts. The Authority officials said that in all new sectors, this technology to be used and from June 2015, work to be started in Sector 150, which is projected as ideal sector of NCR. After Sector 150, this technology will be followed in other new sectors along Noida-Greater Noida Expressway.

Underwiring project is also executed in upscale Sector 18 market.

On explaining the details Vijay Kumar Yadav additional CEO Noida Authority said that the Authority is executing to underline all over headlines in Sector 18 and from June this year work will be started in Sector 150, which is developed by Noida Authority as an ideal sector of NCR.

"The Authority has plan to execute this process in Sector 150, which is developed state of art sector in the state and NCR. By June 2015, creation of cemented ducts to underline of overhead wiring work to be started. We will create RCC (Reinforced Cement Concrete) ducts along the roads so that all kind of wires either electric, telephonic, internet etc lay in the duct," Yadav said.

"In Sector 18, first phase of work has been completed while second phase to be started soon. We are expecting to complete it by the end of this year," the official said.

A senior official said that Sector 150 to first in the state to have established core IT infrastructure to facilitate the e-enablement of life and work. "To encourage the use of latest technology advancements in the power and telecom sector, where physical access to the network is separated from the delivery of services. It provides a futuristic roadmap for creation of an enabling infrastructure through high bandwidth in proper ducts as part of the development. It will allow multiple service providers to use the space efficiently and reduce the clamour for space."

Purusharth Aradhak | TNN | Mar 5, 2015, 12:35 IST

## SECTOR 150, NOIDA TO BE NCR'S FIRST OVERHEAD WIRES FREE ZONE



## INTERNATIONAL STANDARD CRICKET ACADEMY\*

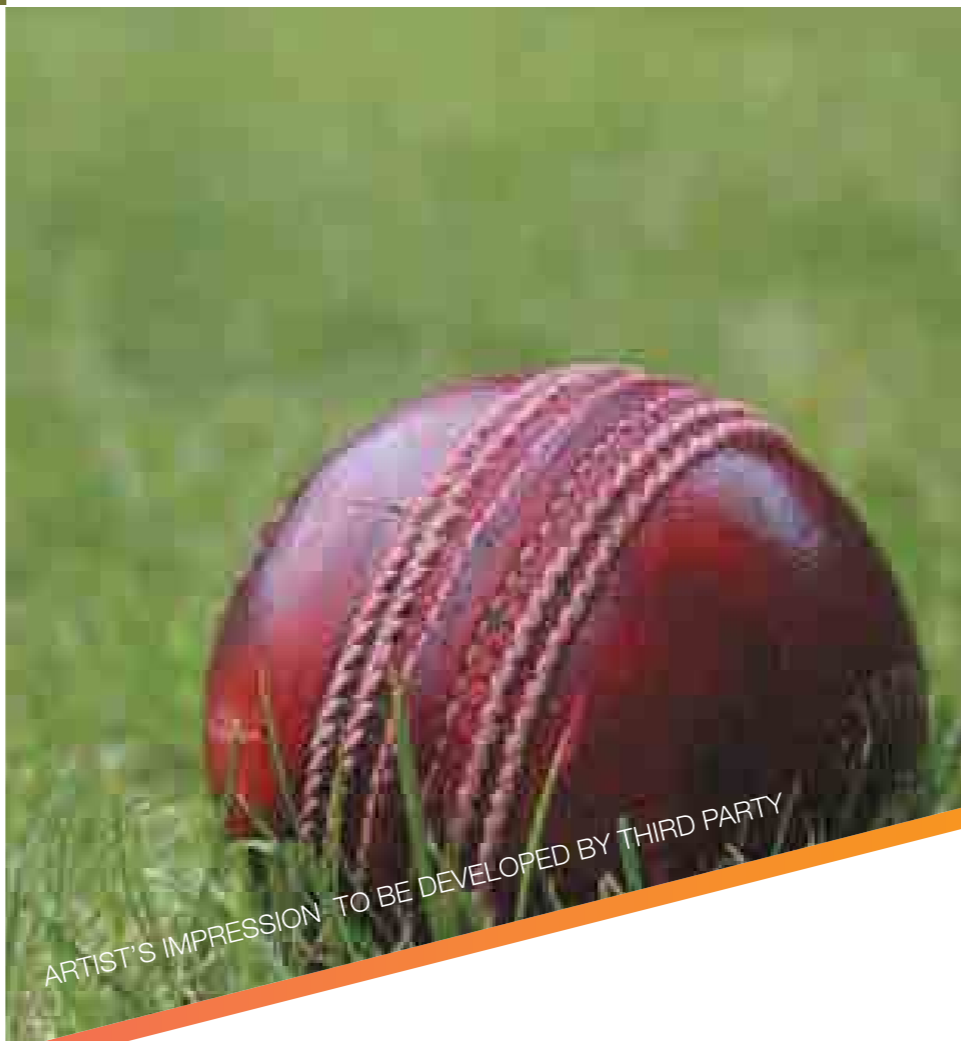


ARTIST'S IMPRESSION. TO BE DEVELOPED BY THIRD PARTY.

ARTIST'S IMPRESSION. TO BE DEVELOPED BY THIRD PARTY.



## 9 HOLE GOLF COURSE\* & GOLF CLUB\*



ARTIST'S IMPRESSION. TO BE DEVELOPED BY THIRD PARTY



## EXPANSIVE RETAIL\* & ENTERTAINMENT CENTRE\*

# MEGA SPORTS CITY

\*Facilities provided as a part of approved master plan for sports city sc - 02 Do not form a part of godrej nurture and these facilities are not To be developed by the developer

# A SECURED ADDRESS





CITY LEVEL  
SECURITY



NEIGHBORHOOD  
SECURITY



PERIMETER  
SECURITY



PROJECT LEVEL  
SECURITY



UNIT LEVEL  
SECURITY

**EMBRACE A LIFE THAT COMES  
WITH 5-TIER SECURITY NET**



CITY LEVEL SECURITY\*



Personal Bike Escort



NEIGHBORHOOD SECURITY\*\*



Shuttle Service



PERIMETER SECURITY



Dog Patrolling



Face detector



Under Vehicle scanner



PROJECT LEVEL SECURITY



Round The Clock CCTV Surveillance



UNIT LEVEL SECURITY



Tops Sister Concern App



RFID Monitoring

\*To be Pre booked from Godrej Nurture to any point in Delhi/ncr  
\*\*Godrej nurture to select destinations during pre defined time slots  
Stock images for representative purpose.

**THOUGHTFULLY DESIGNED**





LANDSCAPE INSPIRED BY ELEMENTS OF NATURE

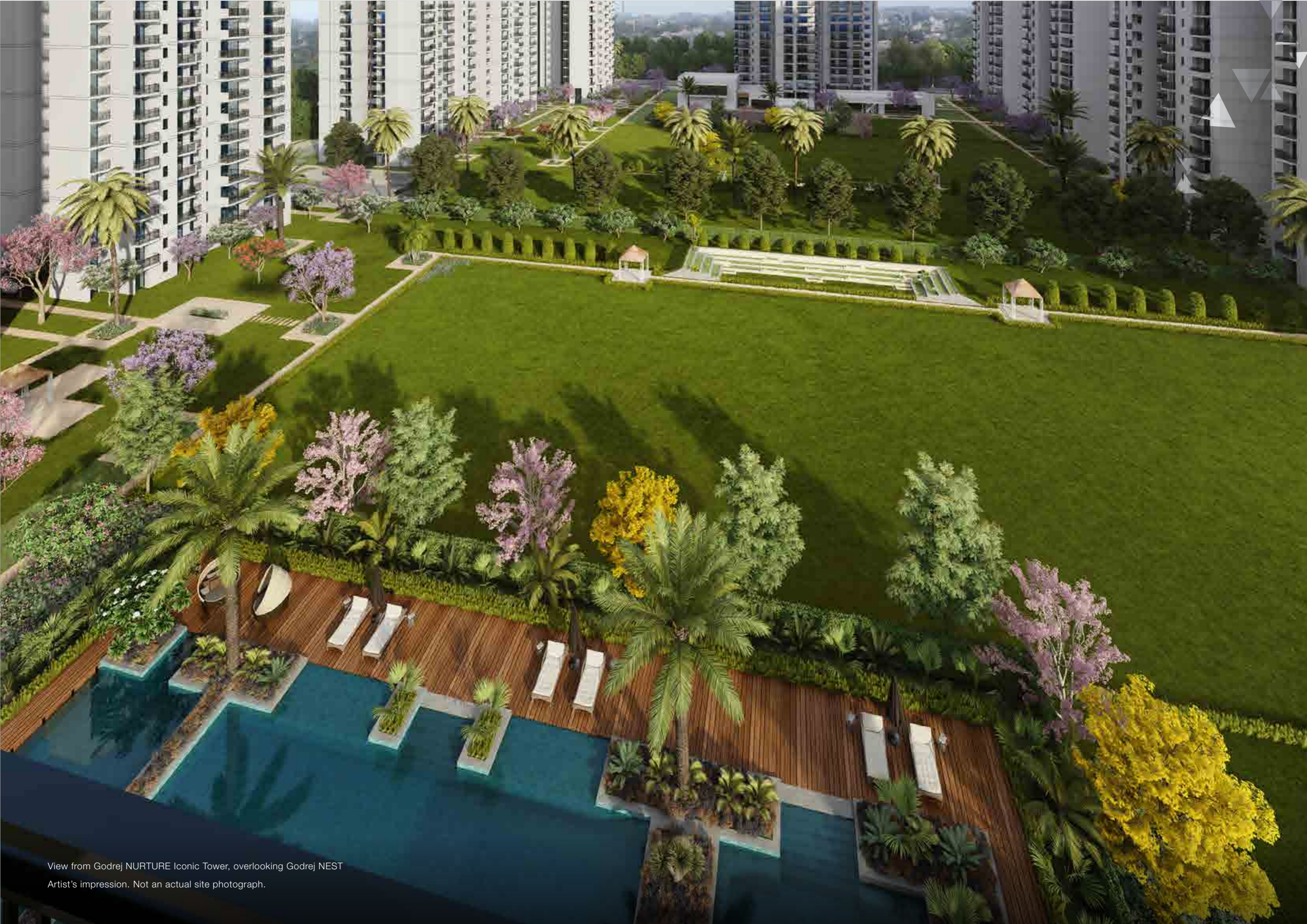


## LANDSCAPE INSPIRED BY ELEMENTS OF NATURE

A: DIGITAL PLAZA | B: MOUND GARDEN | C: HERB GARDEN | D: GARDEN OF PRECEPTION | E: CHESS PLAZA | F: COLOUR GARDEN | G: GARDEN OF SENSES  
H: GARDEN OF VITALITY | I: BUTTERFLY GARDEN | J: AROMATIC GARDEN | K: REFLEXOLOGY | L: YOGA/ MEDITATION LAWN | M: CELEBRATION LAWN | N: PARTY LAWN



Artist's impression. Not an actual site photograph.



View from Godrej NURTURE Iconic Tower, overlooking Godrej NEST  
Artist's impression. Not an actual site photograph.



Artist's impression. Not an actual site photograph.

# ENTRANCE PLAZA

Legend - A: Entry to tower through Stilt | B: Planting | C: Tower Entrance Plaza | D: Drop off | E: Parking



Artist's impression. Not an actual site photograph.

# DIGITAL PLAZA AND MOUND GARDEN

Legend - A: Digital Plaza | B: Stepping Stones | C: Mound Garden



Artist's impression. Not an actual site photograph.

# HERB GARDEN

Legend - A: Herb Garden | B: Tower Entrance Plaza | C: Contemplation Pavilions | D: Outdoor Gym



Artist's impression. Not an actual site photograph.

# SCIENCE PARK AND CHESS GARDEN

Legend - A: Kids Play Area | B: Swimming Pool Zone | C: Colour Garden | D: Chess Garden | E: Maze Garden | F: Science Park





Artist's impression. Not an actual site photograph.

# COLOUR GARDEN

Legend - A: Colour Garden



Artist's impression. Not an actual site photograph.

# **CHESSE GARDEN**

Legend - A: Chess Garden | B: Entry to Tower Stilt | C: Maze Garden | D: Garden of Perception



Artist's Impression. Not an actual site photograph.

# GARDEN OF SENSES



Artist's impression. Not an actual site photograph.

# GARDEN OF VITALITY



Artist's impression. Not an actual site photograph.

# BUTTERFLY GARDEN



Artist's impression. Not an actual site photograph.

## AROMATIC GARDEN



Artist's impression. Not an actual site photograph.



Artist's impression. Not an actual site photograph.

## YOGA & MEDITATION LAWN





Artist's impression. Not an actual site photograph.

# CELEBRATION LAWN

Legend - A: Celebration Lawn | B: Amphitheatre | C: Yoga & Meditation Lawn | D: Pool Deck



Artist's impression. Not an actual site photograph.

# PARTY LAWN



Artist's Impression. Not an actual site photograph.

# SWIMMING POOL ZONE

Legend - A: Pool Deck | B: Surprise Fountain | C: Kids Pool | D: Swimming Pool | E: Jacuzzi | F: Floating Pavilion



# PLANTING INTENT

# PLANTING INTENT - EVERGREENS



# PLANTING INTENT - WHITE



# PLANTING INTENT - LILAC



# PLANTING INTENT - PINK



Stock image is for representative purpose.

# PLANTING INTENT - ORANGE

SHRUBS CLIMBER



Hamelia patens



Pyrostegia venusta



Ixora Hybrid



Caesalpinia pulcherrima

GROUND COVER



Lantana orange

# PLANTING INTENT - YELLOW

TREES



Cassia fistula



Cassia siamea



Peltophorum ferrugineum



Tabebuia argentea

SHRUBS CLIMBER



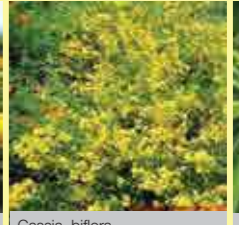
Allamanda nerifolia



Tecoma gaudichaudi



Cassia lavigata



Cassia biflora



Thevetia neriifolia

GROUND COVER



Lantana depressa



Wedelia trilobata



Zephyranthes yellow

# PLANTING INTENT - BLUE

SHRUBS CLIMBER



Plumbago capensis



Jacquemontia violacea



Wisteria sinensis

# PLANTING INTENT - RED

TREES



Butea monosperma



Bombax ceiba



Delonix regia



Erythrina indica

SHRUBS CLIMBER



hibiscus rosa sinensis



Canna red



Clerodendron splendens



Acalypha wilkesiana

GROUND COVER



Acalypha wilkesiana



Lantana red



# HOMES THAT NURTURE YOUR LOVED ONE'S DEVELOPMENT

Godrej Nurture is a project that revolves around every aspect of your child's growth, development and safety by all means. The entire development consists of avenues and facilities that are required for a child's advancement right from their birth till their teen ages.



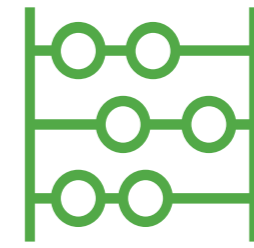
Stock image is for representative purpose.



Physical  
Growth



Cognitive  
Growth



Social &  
Emotional  
Awareness





# PHYSICAL GROWTH

#PlayandGrow





Stock image is for representative purpose.

## TENNIS COURT



Stock image is for representative purpose.

## SQUASH COURT



Stock image is for representative purpose.

## HALF BASKETBALL COURT



Stock image is for representative purpose.

## SKATING ARENA



Stock image is for representative purpose.

## SWIMMING POOL



Stock image is for representative purpose.

## CRICKET PITCH



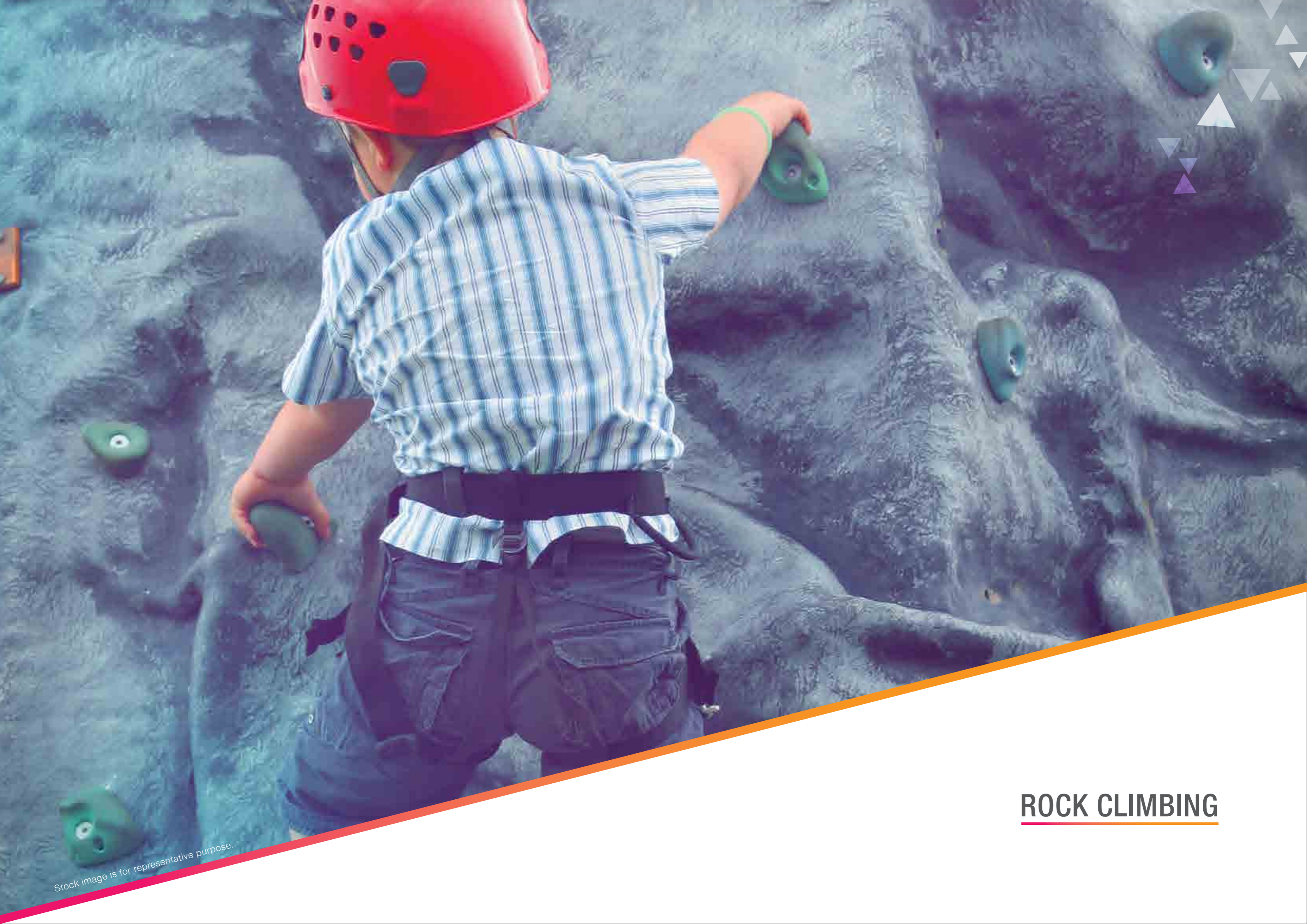
**DANCE STUDIO**





## NET CLIMBING

Stock image is for representative purpose.



Stock image is for representative purpose.

## ROCK CLIMBING



Stock image is for representative purpose.

## OBSTACLE ARENA



Stock image is for representative purpose.

**MARTIAL ARTS**



TENNIS



SQUASH



HALF BASKETBALL COURT



SKATING PITCH



SWIMMING POOL



CRICKET PITCH



MULTIPLE DANCE CLASSES



NET CLIMBING



ROCK CLIMBING



MARTIAL ARTS

**PHYSICAL GROWTH**

# COGNITIVE GROWTH

#PlayandLearn





Stock image is for representative purpose.

## ART AND CRAFT



## ABACUS - VEDIC MATHS

Stock image is for representative purpose.





Stock image is for representative purpose.

## DRAMATICS



Stock image is for representative purpose.

## PAINTING CLASSES



**LIBRARY**

Stock image is for representative purpose.



Stock image is for representative purpose.

## STORY TELLING\*

\*we will be creating a repository of books



## CREATIVE WRITING AND LANGUAGE CLASSES

Stock image is for representative purpose.



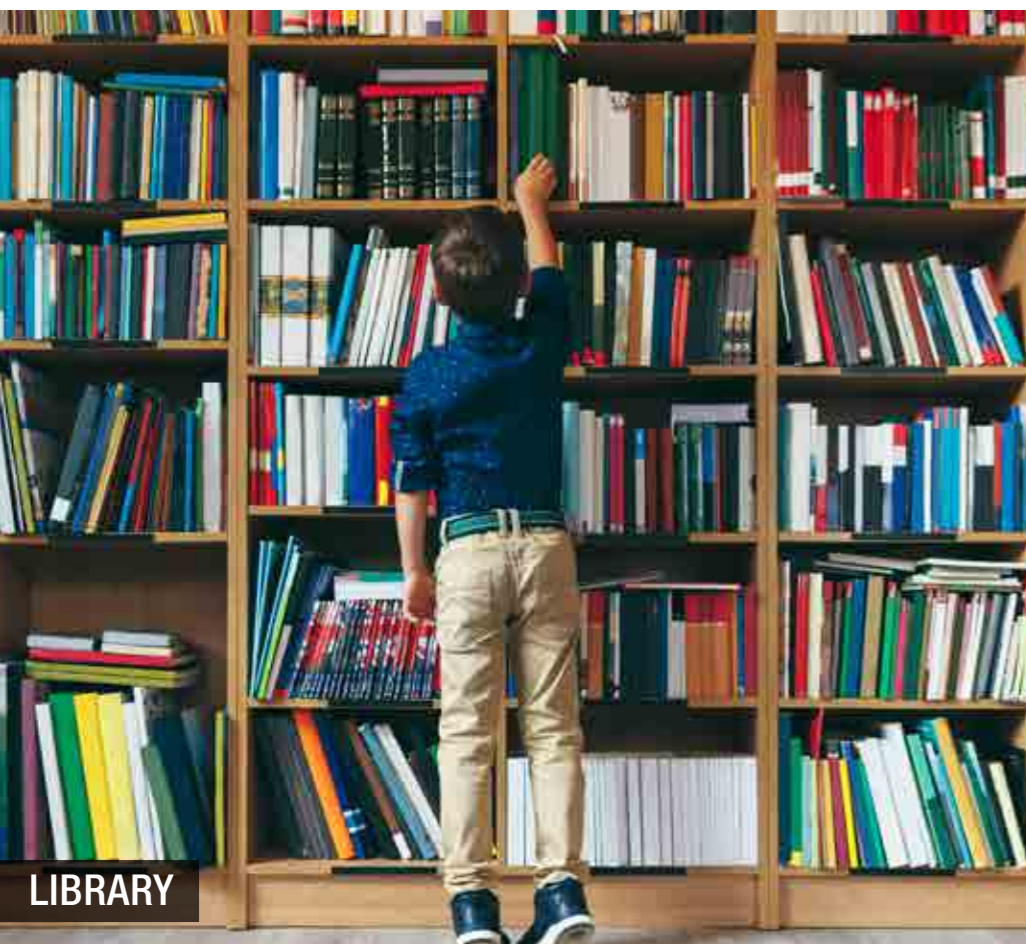
ART AND CRAFT



ABACUS - VEDIC MATHS



DRAMATICS



LIBRARY



STORY TELLING



CREATIVE WRITING AND LANGUAGE CLASSES

# COGNITIVE GROWTH

# SOCIAL & EMOTIONAL AWARENESS

#PlayandNurture



**BUDDING  
MUSICIAN**

**OR**



**ASPIRING  
CRICKETER**

**LET YOUR KIDS DECIDE**

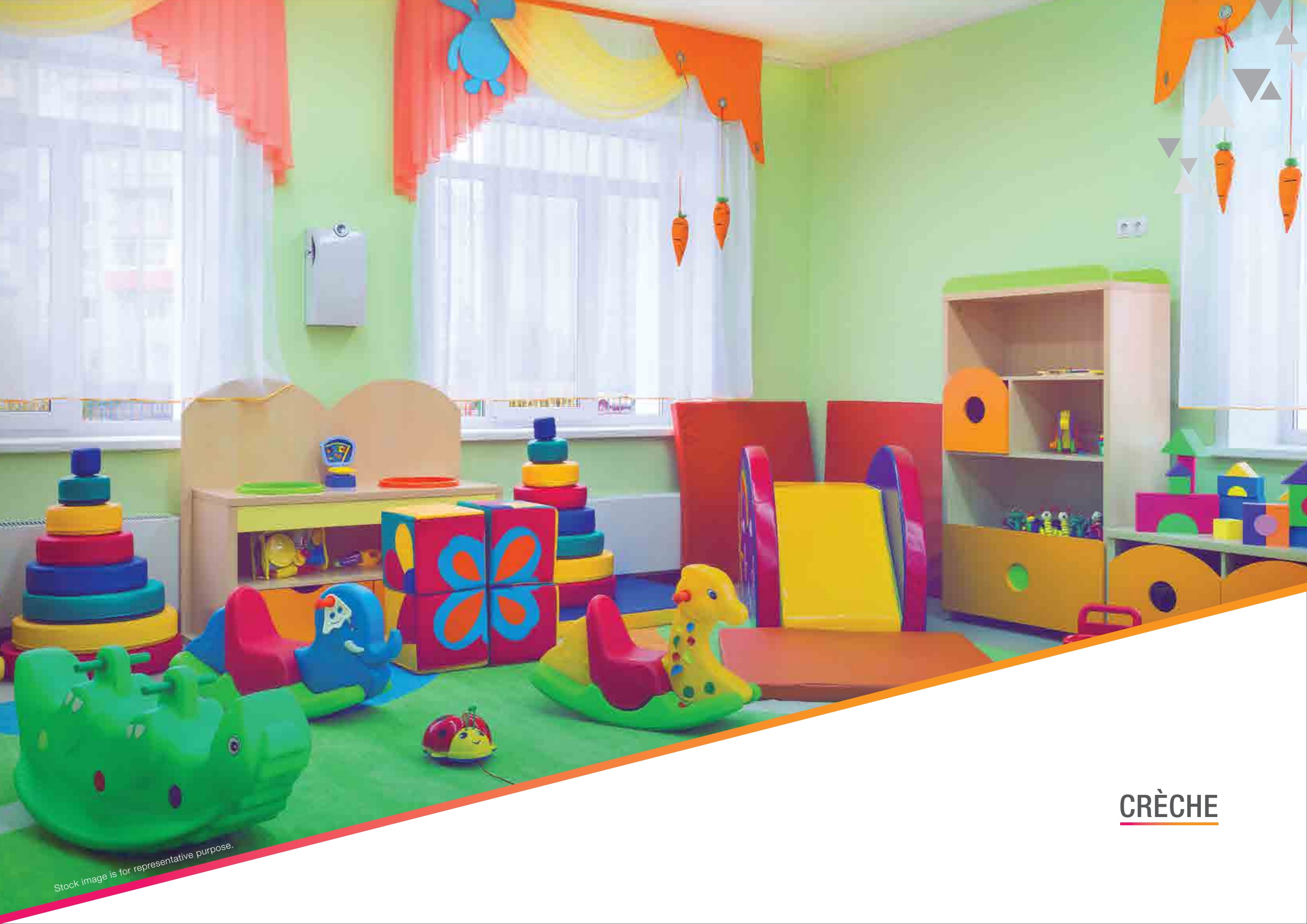
Stock image is for representative purpose only.





## MUSIC ROOM WITH INSTRUMENTS

Stock image is for representative purpose.



Stock image is for representative purpose.

**CRÈCHE**



Stock image is for representative purpose.

## MINIPLEX WITH KIDS MOVIES AND DOCUMENTARIES\*

\*We will be creating a repository of Films



## INDOOR PLAY AREA

Stock image is for representative purpose.



**VIRTUAL GAMING ZONE**



## YOGA & MEDITATION AREA

Stock image is for representative purpose.



MUSIC ROOM



CRÈCHE



MINIPLEX



INDOOR PLAY AREA



VIRTUAL GAMING ZONE



YOGA & MEDITATION AREA

**SOCIAL & EMOTIONAL AWARENESS**



**CLASSICAL  
DANCER**

**OR**



**MASTER  
OF BALLET**

**LET YOUR KIDS DECIDE**

Stock image is for representative purpose only.



A cluster of small, dark brown triangles of various sizes and orientations is located in the top right corner of the page, set against the orange background.

# **SAFE HOMES FOR YOUR LOVED ONES**



## ROUNDED EDGES OF WALLS

Stock image is for representative purpose.



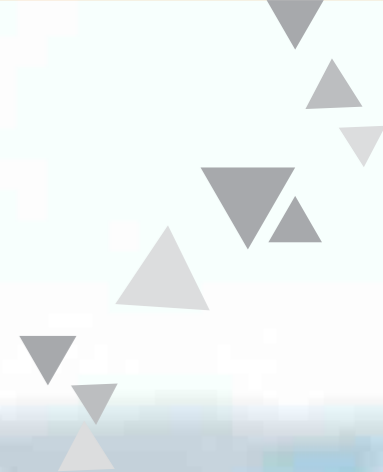
## MOLDED SKIRTING

Stock image is for representative purpose



**COVERED SHOCKPROOF  
SWITCH BOARDS AT HOMES**

Stock image is for representative purpose.



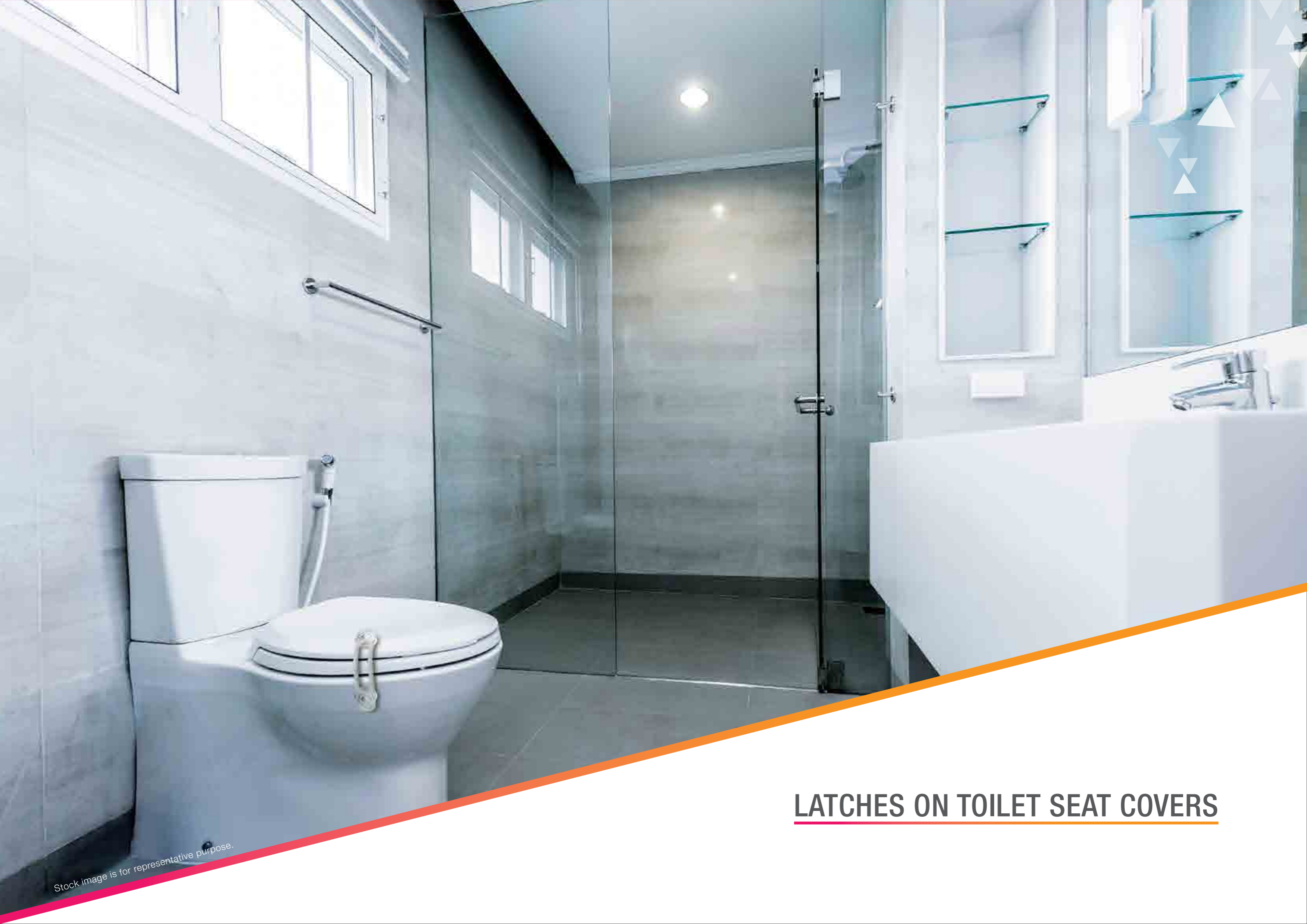
**CHILD SAFE WINDOWS WITH  
GRILLED AND WITH MOSQUITO NETS**

Stock image for representative purpose.



## KIDS SAFE RAILINGS

Stock image is for representative purpose.



Stock image is for representative purpose.

## LATCHES ON TOILET SEAT COVERS



## **CHILD SAFE LOCKS ON KITCHEN CABINETS**

Stock image is for representative purpose.





**DOOR HINGES TO ENSURE  
DOOR CLOSSES SLOWLY**

Stock image is for representative purpose.



Stock image is for representative purpose.

## **CHILD LOCK ON DOORS WITH SENSORS**



Stock image is for representative purpose.

## LOW / NO VOC PAINTS



## HANDRAILS INSIDE BATHROOMS

Stock image is for representative purpose.



**ANTI-SKID TILES IN  
BATHROOMS & TERRACES**

Stock image is for representative purpose.



**SPECIAL INTRODUCTORY OFFER**

<b>30%</b>	Token Amount (T.A.)	5 Lakhs
	Within 18 days	10%* - T.A.
	Within 60 Days	10%* + C.C.
	Within 180 Days	10%*
<b>40%</b>	Completion of Superstructure	40%*
<b>30%</b>	Application of OC	20%*
	On Intimation of Possession	10%*

\*T&C Apply | C.C = Club Charges

**PAYMENT PLAN**

Unit Type	Carpet Area (Sq. M.)	Exclusive Area (Sq. M.)	Total Area (Sq M)
<b>NURTURE</b>			
2BHK	69	14	83
3RHK	83.30	18.7	102
3BHK + Utility	113.60	23.54	137.14
<b>ICONIC</b>			
Iconic - 3BHK + Utility	126.40	26.50	152.90
Iconic 4BHK + Utility	150.36	28.70	179.06
Iconic 4BHK + Utility + Family Lounge	169.20	32	201.20

## UNIT CONFIGURATION






Unit Type	Pre Launch Price (in Cr.)*
<b>NURTURE</b>	
2BHK	0.65 - 0.70
3RHK	0.79 - 0.86
3BHK + Utility	0.99 - 1.27

PREMIUM PALLET: MODULAR KITCHEN | WOODEN FLOORING IN BEDROOM

\*Govt Charges & Taxes extra as applicable. Club membership charges of Rs 1 Lac over & above the Cost of Property.



## PRICING AND SPECIFICATION



Unit Type	Pre Launch Price (in Cr.)*
<b>ICONIC</b>	
Iconic - 3BHK + Utility	1.38 - 1.48
Iconic 4BHK + Utility	1.59 - 1.71
Iconic 4BHK + Utility + Family Lounge	1.79 - 1.92

LUXURY PALLET: ITALIAN MARBLE IN LIVING & DINING AREA | MODULAR KITCHEN WITH HOB & CHIMNEY ONLY & BUILT IN APPLIANCES (DISH WASHER, OTG, OVEN & REFRIGERATOR) | WARDROBE & SHOWER CUBICAL IN MASTER BEDROOM | SPLIT AC'S IN ALL ROOMS

\*Govt Charges & Taxes extra as applicable. Club membership charges of Rs 1 Lac over & above the Cost of Property.



## PRICING AND SPECIFICATION

₹ 1 LAKH ONLINE PAYMENT / DD / CARD SWIPE & ₹4 LAKHS CURRENT DATED CHEQUE

SUBMISSION OF APPLICATION FORM

KYC DOCUMENTS

ADDITIONAL DISCOUNT OF ₹ 50,000 ON ONLINE PAYMENT

PRIORITY GENERATION PROCESS

Account Name	GODREJ NURTURE COLLECTION ACCOUNT - BDPL
Account Number	250000001501
Bank name	IndusInd Bank Ltd
IFSC Code	INDB0000005
Branch Address	Dr. Gopal Das Bhawan, 28 Barakhamba Road, New Delhi - 110001



## GODREJ NURTURE RTGS DETAILS

**THANK YOU**

